

## MedTests® Capturing

Automate medical tests orders processing with Scantron OMR Scanning

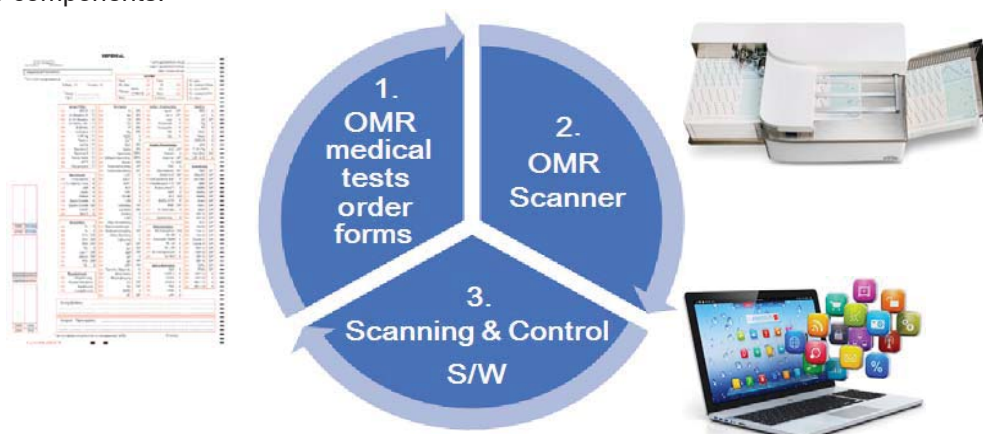


### The Situation

- ⇒ Are you managing a large Medical tests laboratory or a Hospital lab serving hundreds or thousands of clinical doctors or other smaller labs?
- ⇒ Do you receive daily, samples along with medical tests orders for thousands of patients?
- ⇒ Do you have a large group of computer operators manually keying in the tests orders into the Laboratory Information System?
- ⇒ Is this manual procedure error prone?
- ⇒ Is this manual procedure causing a bottle neck for your laboratory performance?
- ⇒ Are you wasting a lot of money, just to key in the orders for medical tests?

Is there an alternative way to process the forms?

**MedTests® Capturing** is a complete automated capturing solution for medical tests orders. The solution consists of three components:



## MedTests® Capturing

### The Tests orders forms

Your existing lab tests orders forms are re-designed, so that all the common tests are printed on the form, with checkmark boxes next to the names. The doctors ordering the tests, simply check the appropriate box next to the test name.

Each form has a unique per form id number and a barcode printed on it.

The form has detachable adhesive labels with the same unique form id number printed on them, to be used for the test tubes.

The form has free space so that the doctor ordering the tests can (optionally) attach a barcode label with the sample's/patient's unique ID.

The forms have special marks, such as the timing marks and the form id marks that are read by the



### The OMR Scanner

The Scanner of the solution is iNSIGHT 4ES. Scanron's iNSIGHT 4ES OMR Scanner is a high speed, high accuracy scanner with Imaging capabilities and automatic feeder.



The Scanner with one pass "reads" the OMR check marks – the tests ordered - and the barcodes – the form unique ID and possibly the sample unique ID - with 99.99% accuracy. This success rate is achieved by various control mechanisms built into the scanner ensuring that only one form is scanned at the time, the forms are not skewed during scanning etc.

### The Scanning software

The Scanning software controls the scanning process, captures the data from the scanner, performs validation checks on the captured data - i.e.: is the sample type selected compatible with the tests selected? - and outputs the captured data in a format – .xml, .csv, database table - that can be automatically imported into to Laboratory Information System of the Lab.



### The benefits of the solution

- ◆ All ordered tests are imported into the Laboratory information system of the LAB very fast. A typical installation with one scanner can process 1,500 test orders with multiple tests in each order in three or four hours.
- ◆ Labor costs are reduced and existing employees can be used more effectively.
- ◆ Almost zero mistakes are made by the automatic capturing of the data with the scanner – No human intervention in the capturing process.
- ◆ Increased satisfaction of the customers of the lab (Doctors and other labs).
- ◆ Increased satisfaction of the personnel of the LAB.

**Contact us for more information**

## Anova Consulting

19 Karea str.,11636, Mets,Athens,Greece, T: +30210920287, +302106400527, E: sales@anova.gr, URL: www.anova.gr